

Lesson 8

Calculation of shares:

- **Brother Uterine & Sister Uterine**
- **True Grand Mother**

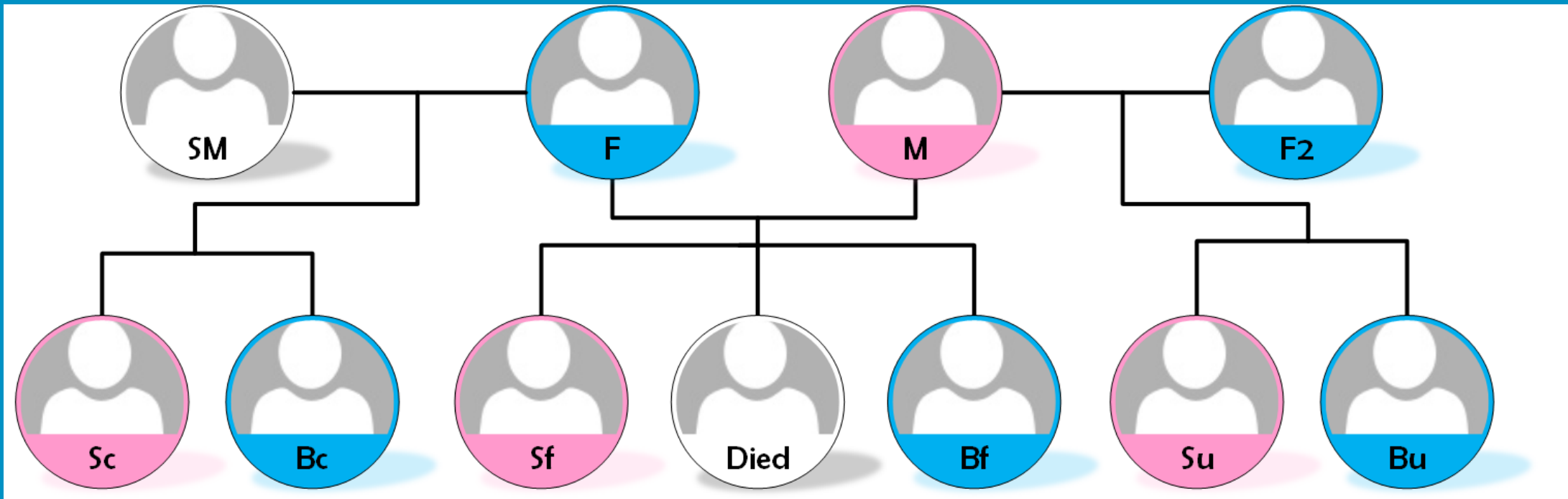
Islamic Laws of Inheritance

Dr. Assaina Beary

Lesson 8

- In this lesson the **Brother Uterine & Sister Uterine's share** will be covered.
- **True Grand Mother Terminology** will be familiarized.
- **True Grand Mother's share** will be covered.
- Understand these.

Terminology Full & Consanguineous



F=father, M=mother, SM=stepmother father's second wife,
F2=mother's previous husband before getting married to father,
Sf=sister full, Bf= brother full, Sc,Bc=sister and brother

Uterine Brother & Sister

- **Uterine** = Same Mother and different Father
- Also called **Maternal half brother** and **sister**.
- **Cognatic**.
- **Secondary heirs**.
- **Excluded by: S, SS..., F, D, SD, TGF.**
- **Bf, Sf do not exclude them.**
- **2 or more Bu and/or Su reduce share of M**
- **Sura Nisa Ayat 12** is the basis

Quran 4:12 contd..

If a man or a woman die in a state of Kalalath (with no ascendants or descendants) and he/she has a brother or sister then each one of them will get one sixth, but if more than two they share one third, after payment of debts and legacies, without any harm to anyone. Thus it is ordained by Allah, Allah is All Knowing, Most forbearing.

وَإِنْ كَانَ رَجُلٌ يُورَثُ كَلَالَةً أَوْ امْرَأَةٌ وَلَهُ أَخٌ أَوْ أُخْتٌ فَلِكُلِّ وَاحِدٍ مِّنْهُمَا السُّدُسُ فَإِنْ كَانُوا أَكْثَرَ مِنْ ذَلِكَ فَهُمْ شُرَكَاءُ فِي الثُّلُثِ مِنْ بَعْدِ وَصِيَّةٍ يُوصَىٰ بِهَا أَوْ دَيْنٍ غَيْرِ مُضَارٍّ وَصِيَّةً مِّنَ اللَّهِ وَاللَّهُ عَلِيمٌ حَلِيمٌ

Exception to general rule

Bu & Su take equal parts

unlike 2:1 ratio for M:F

Verse 12 Sura Nisa is the basis

Single Bu / Su	No S, SS, D, SD, F, TGF	1/6
2 or more Bu and/or Su (2Bu/2Su/Bu+Su)	No S,SS, D, SD, F, TGF	1/3 Equally divided
Any number	Presence of S, SS, D, SD, F, TGF	Nil

Learn and remember this well

Bu / Su

	Su/Bu /both
S	0
SS	0
F	0
TGF	0
Bf	0-1/6-1/3
Sf + D/SD	0 (D/SD prevents)
Bc	0-1/6-1/3
Sc + D/SD	0 (D/SD prevents)
other	0-1/6- 1/3

Bu / Su

		Su/bu /both
S		0
SS		0
F		0
TGF		0
other	D/SD present	0
	No D/SD	Single 1/6
		2 or more 1/3

Bu & Su - Problem Solving

Now solve the following cases. Living heirs are given.

Find the share of Bu & Su.

Confirm that they are correct by looking at the answers in the next slide

1.	M, 2Sf, Sc, Bu	5.	H, Bu, Bf.
2.	2Sf, Bc, 2Su	6.	W, 2Bu, Su, Bc, Bf
3.	Sf, 2Sc, Bu, Su.	7.	M, 2Sf, Su, Bc
4.	Sf, Bf, Sc, Bc, Su, Bu.	8.	Sf, Sc, Bu, Su.

In problem solving cases relations mentioned are to the person died (male/female).

E.g. H, F, D means lady has died leaving the husband, father and daughter.

Bu & Su - Problems - SOLUTIONS

No.	Question	Answer
1.	M, 2Sf, Sc, Bu	$M = 1/6, 2Sf = 2/3, Sc = \text{nil}, Bu = 1/6$
2.	2Sf, Bc, 2Su	$2Sf = 2/3, Bc = \text{bal} = \text{nil}, 2Su = 1/3$
3.	Sf, 2Sc, Bu, Su.	$Sf = 1/2, 2Sc = 1/6, Bu + Su = 1/3$
4.	Sf, Bf, Sc, Bc, Su, Bu.	$Sf + Bf = \text{bal} = 2/3, Sc + Bc = \text{nil}(\text{Ex by Bf}), Su + Bu = 1/3$
5.	H, Bu, Bf.	$H = 1/2, Bu = 1/6, Bf = \text{bal} = 1/3$
6.	W, 2Bu, Su, Bc, Bf	$W = 1/4, 2Bu + Su = 1/3, Bc = \text{nil}, Bf = \text{bal} = 5/12$
7.	M, 2Sf, Su, Bc	$M = 1/6, 2Sf = 2/3, Su = 1/6, Bc = \text{bal} = \text{nil}$
8.	Sf, Sc, Bu, Su.	$Sf = 1/2, Sc = 1/6, Bu + Su = 1/3$

Note: Actual shares may vary, after considering other heirs.

Shares vary when Radd or Awl is required to be applied.

Sf / Sc / Bu / Su - Shares

Balance heirs	Sf	Sc	Su/Bu /both
S	0	0	0
SS	0	0	0
F	0	0	0
TGF	0 /b	0/ b	0
Bf	b	0	0 - 1/6 - 1/3
Sf + D / SD	b	0	0
Bc	1/2 - 2/3	b	0 - 1/6 - 1/3
Sc + D / SD	# (not alive)	b	0
Other	1/2 - 2/3	1/6 - 0 - 1/2 - 2/3	0 - 1/6 - 1/3

Sf / Sc - Shares

Balance heirs		Sf	Sc	Su/Bu
S		0	0	0
SS		0	0	0
F		0	0	0
TGF		0 /b	0/b	0
Bf		b	0	0-1/6-1/3
Sf (If D / SD alive)		b	0	0
Bc	Single Sf (No D/SD)	1/2	b	1/6-1/3
	2 or more Sf (No D/SD)	2/3	b	1/6-1/3
	No Sf but D/SD +	#	b	0
Sc (If D / SD alive)	No Sf	# (not alive)	b	0
No balance heirs as above	Single Sf (No D/SD)	1/2	1/6	1/6-1/3
	2 or more Sf (No D/SD)	2/3	0	1/6-1/3
	No Sf (No D/SD) +1 Sc	#	1/2	1/6-1/3
	No Sf (No D/SD) +2 or more Sc	#	2/3	1/6-1/3
	No Sf, No Sc but D/SD+	#	#	0
	No Sf, No Sc No D/SD	#	#	1/6-1/3

Bu & Su - sum up

Pr./Sec	Secondary Heir
Excluded by	S, SS, SSS, F, TGF, D, SD
Excludes	None
Share fraction	Refer back
Effect on others	Reduces share of mother
Effect of others	No effect
Effect of Awl	Share reduces
Effect of Radd	Eligible
Special occasion	Bf & Sf do not exclude them Bu & Su take equal shares

True Grand Mother

Only True grand mothers are eligible.

True Grand mother = No untrue grand father in the lineage

True Grand father (TGF) is Grand Father with no female in between the person died and the grandfather. E.g.. Father's father (FF), or his father (FFF)...

Untrue Grand Father is a grand father with a female between the person died and the grand father. e.g. Mother's father (MF), his father (MFF) or father's mother's father (FMF)

True GM = MM, FM, MMM, FFM, FMM,

Untrue GM = MFM, FMFM.

True Grand Mother

True GM

MM = mother's mother

FM = father's mother

MMM = mother's mother's mother

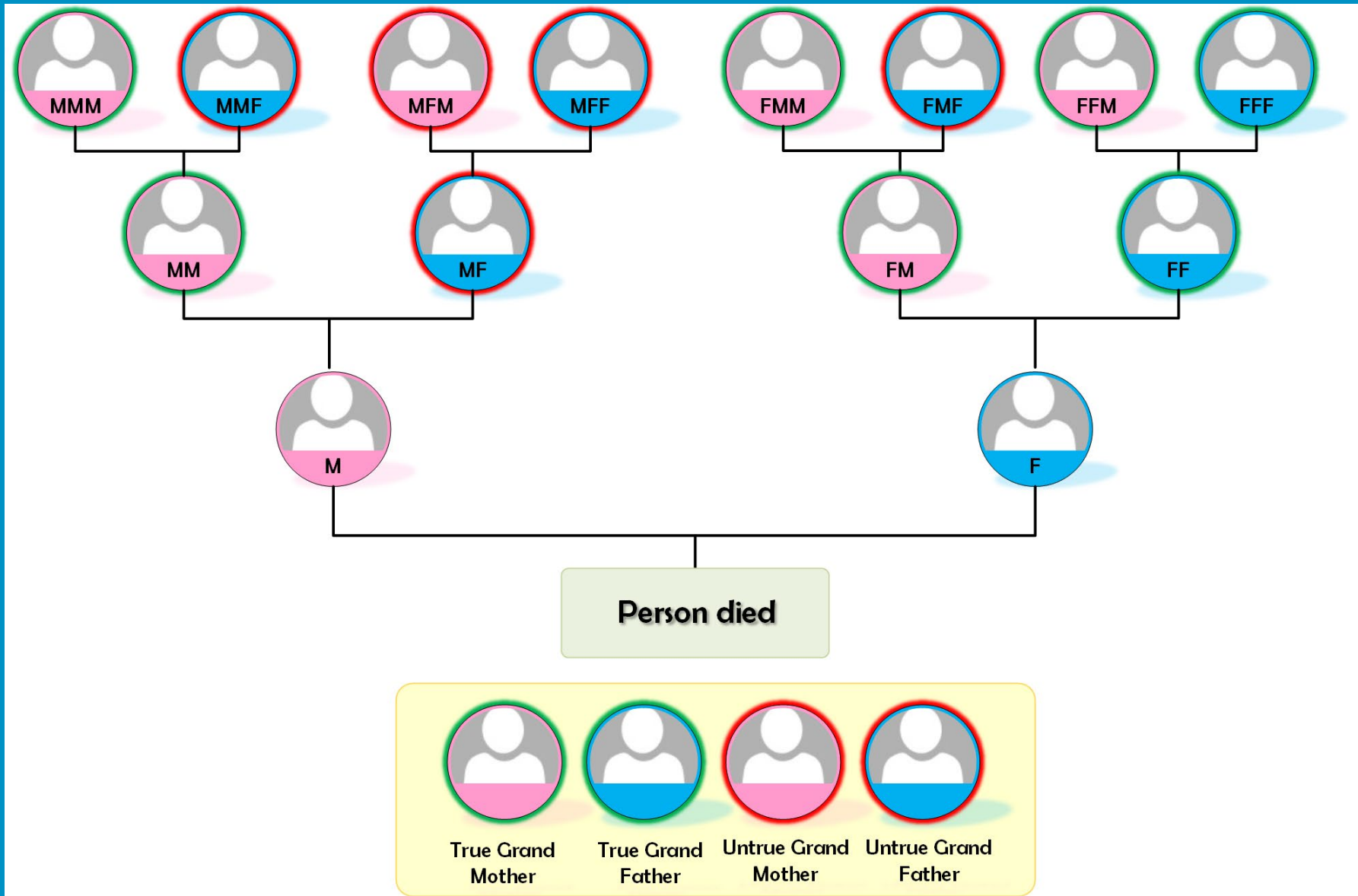
FFM = father's father's mother

FMM = father's mother's mother

Untrue GM

MFM = mother's father's mother

True Grand Mother



True Grand Mother

Confirmed by Prophet (s.a) practice.

Khubaisath bn duaib narrates

Aboobacker (R.) made this practice into effect after GM approached him regarding her share , after confirming the prophet's practice as told by Mugeerat b Shuaib and confirmed by Muhammadubn Maslamathal ansari.

(Reported by 5)

Single **1/6**

More than 1 **1/6 equally divided**

Learn and remember this well

No Share

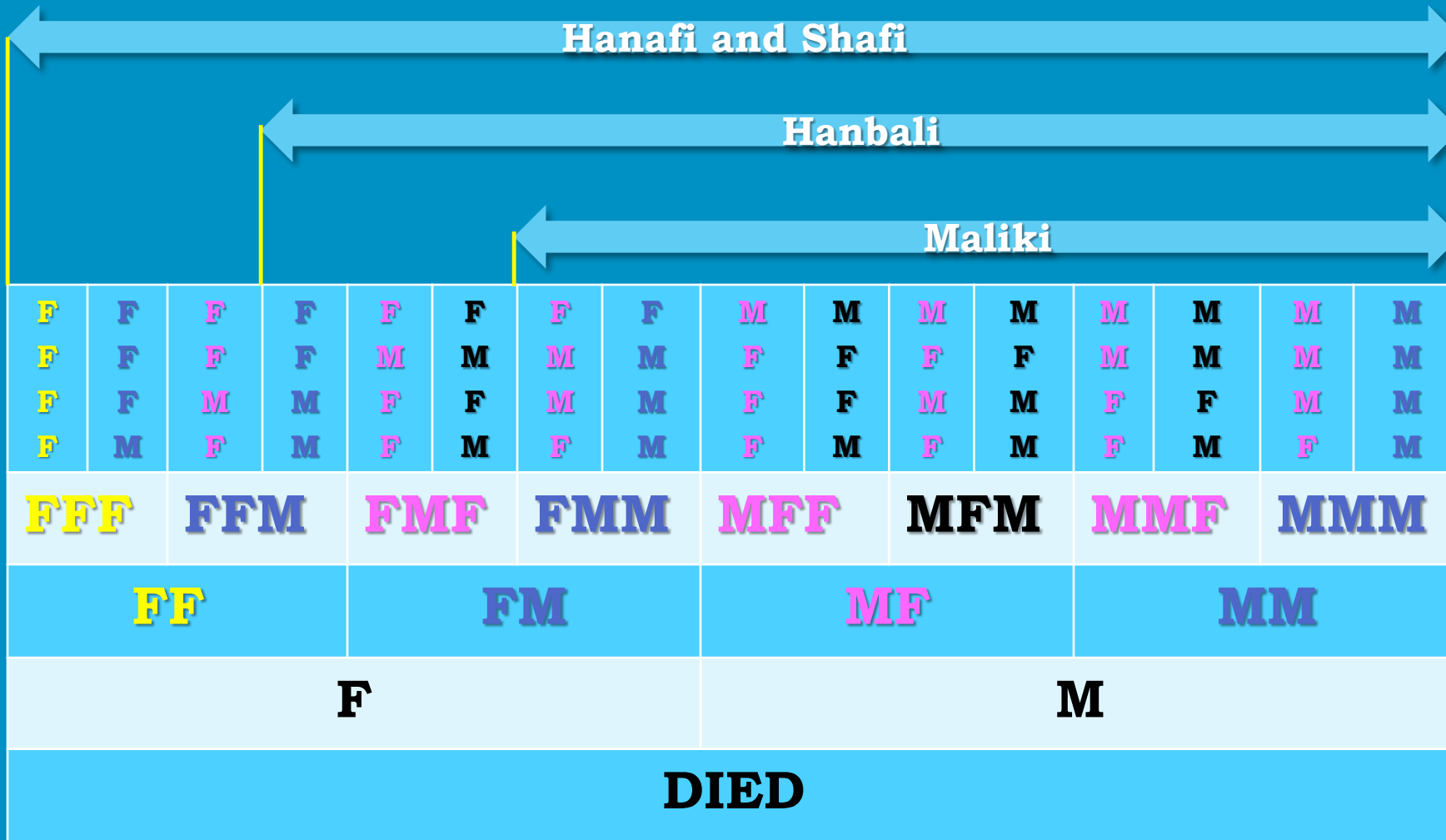
- M will prevent FM and MM share
- That is if mother is there TGM will not get any share
- If F is there FM will not get share
- Near GM will exclude distant GM

Learn and remember this well

TGM - Difference of opinion

	Hanafi	Shafi	Maliki	Hanbali	
All TGM inherit	Yes	Yes	No	No	
M Excludes all TGM	Y	Y	Y	Y	
F excludes all paternal GM	Y	Y	Y	No	Because F does not exclude Maternal GM
Nearer Maternal GM excludes all remote GM	Y	Y	Y	Y	
Nearer Paternal GM excludes all remote GM	Y	Paternal Only	Paternal Only	Y	Because F does not exclude Maternal GM
UTGM as Distant Kindred	Y	Y	No	Y	

True Grand Mother



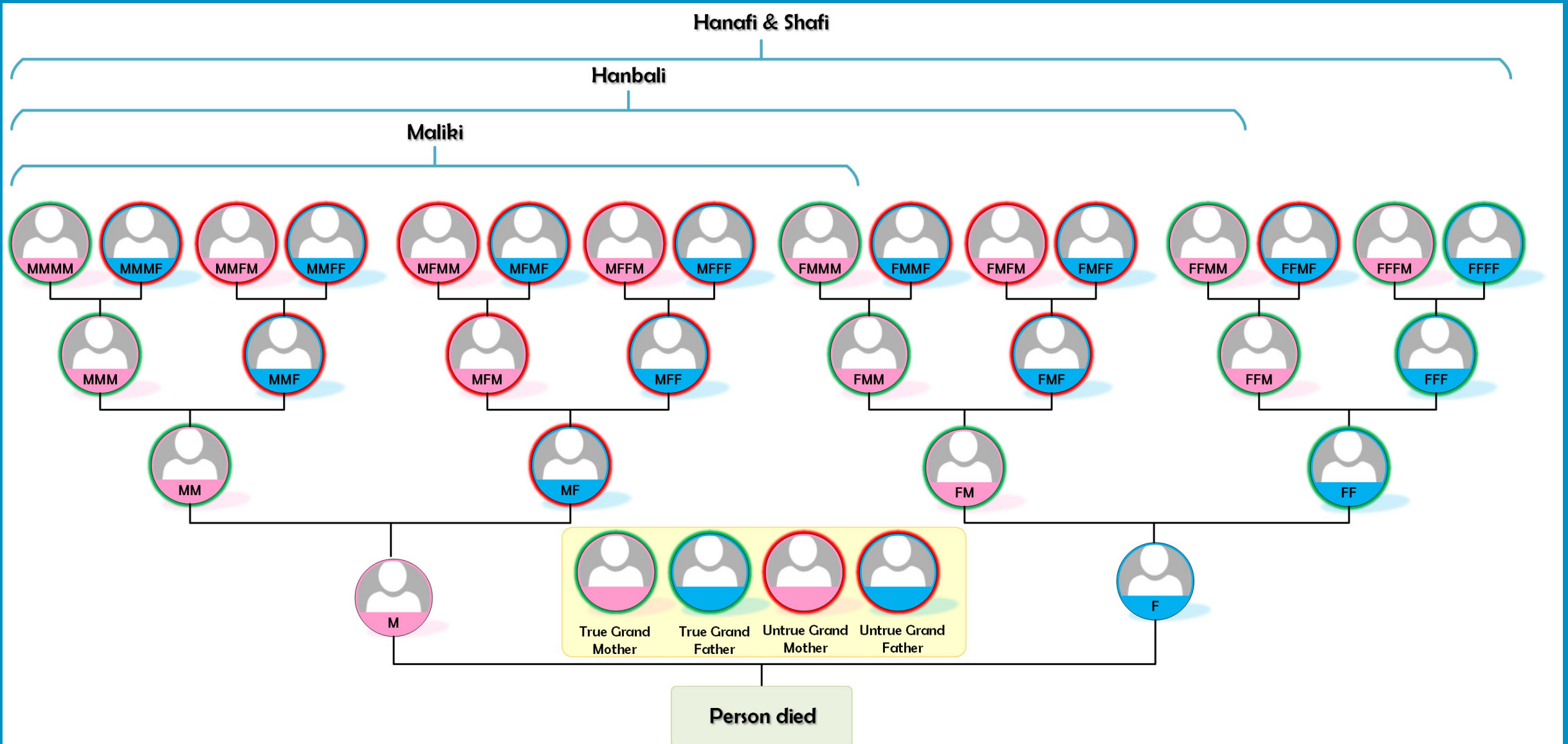
FF = TGF

FM = TGM

MF = UTGF

MFM = UTGM

TGM - Difference of opinion



TGM – Sum up

Pr./Sec	Secondary Heir
Excluded by	M, F
Excludes	Higher GM
Share fraction	Refer back
Effect on others	Nil
Effect of others	Excluded by M and lower GM
Effect of Awl	Share reduces
Effect of Radd	Eligible
Special occasion	-
Remarks	Only TGM are eligible

رَبَّنَا تَقَبَّلْ مِنَّا إِنَّكَ أَنْتَ السَّمِيعُ الْعَلِيمُ

وَتُبَّ عَلَيْنَا إِنَّكَ أَنْتَ التَّوَّابُ الرَّحِيمُ

اللهم اغفر لنا، يا أرحم الراحمين

رَبَّنَا آتِنَا فِي الدُّنْيَا حَسَنَةً وَفِي الْآخِرَةِ حَسَنَةً وَقِنَا عَذَابَ النَّارِ

رَبَّنَا ظَلَمْنَا أَنفُسَنَا وَإِن لَّمْ تَغْفِرْ لَنَا وَتَرْحَمْنَا لَنَكُونَنَّ مِنَ الْخَاسِرِينَ

اللهم صلِّ وسلِّم وبارك على عبدك ورسولك محمد سيد الأولين

والآخرين، وعلى آله وصحبه أجمعين